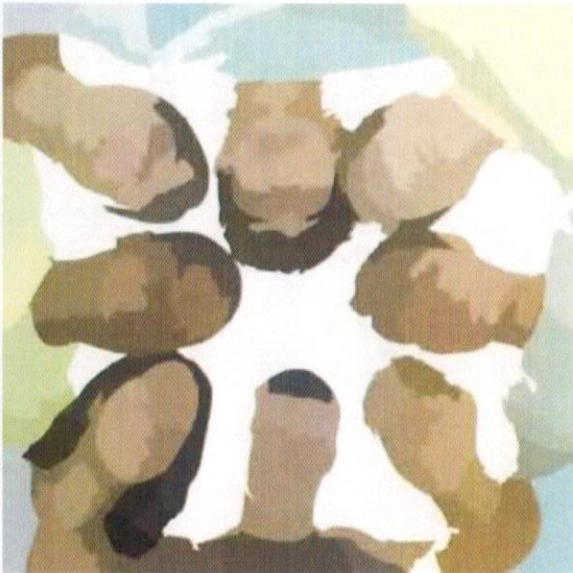


Is your child ?

- *Acting out in school ?*
- *Disrespectful at home or in the community?*
- *Having anger management issues ?*
- *Experimenting with Drugs and Alcohol?*



Prevention Services Unit
1501 Arch Street, 9th Floor
Philadelphia, Pennsylvania 19102

Tel: 215-686-8328
[http://www.courts.phila.gov/common-pleas/family/
juvenile/](http://www.courts.phila.gov/common-pleas/family/juvenile/)

PREVENTION SERVICES UNIT

*Strengthening Youth and
Families*



Philadelphia Family Court
The Office of Children, Youth, and
Families

We Can Help!

The **Prevention Services Unit (PSU)** seeks to prevent children and families in Philadelphia County from entering the Dependency and Delinquency Systems via early intervention efforts.

We are dedicated to strengthening families and keeping them together by referring youth and families to services that best fit their individualized needs.

What We Do

The Prevention Services Unit serve as a gateway to a host of comprehensive, short-term community based services for youth and their families. Our primary goal is to enable your family, in challenging times, to remain intact while receiving the necessary supports and services to build upon the strengths of your family and thereby avoid the need for further intervention by the Child Welfare System.

What We Offer

The Prevention Services Unit will facilitate referrals for:

- Individual and Family Counseling
- Parent Education and Support
- Mentoring Services
- Positive Youth Development Programs
- Help in accessing a variety of programs such as substance abuse, mental health, and domestic violence.



How We Work

The Prevention Services Unit, in collaboration with the Philadelphia Department of Human Services, will refer families for community-based services to help parents to strengthen their families and raise their children in loving, safe, and nurturing homes.

Start Now

- Call the Prevention Services Unit at 215-686-8328.
- Visit our offices at 1501 Arch Street, 9th Floor, Philadelphia, PA 19102.

Families seeking assistance will meet with a staff member experienced in social work who will assess the family's strengths and needs, determine which services will best benefit the family, and make the appropriate referrals to the Department of Human Services.

Why Contact Us?

- To receive services when you are in need of assistance
- To strengthen and keep your family together in challenging times.
- To avoid the need for further intervention from the Child Welfare System.

**The First Step begins
with YOU...**
